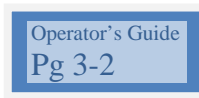


Acquity Operating Instructions

EVE Program – UMass Amherst

Power up

1. Turn on the three power switches moving from the bottom unit up:
 - solvent manager
 - sample manager
 - PDA detector
2. Launch the software by double clicking on the Masslinx v4.0 icon or in windows programs menu.



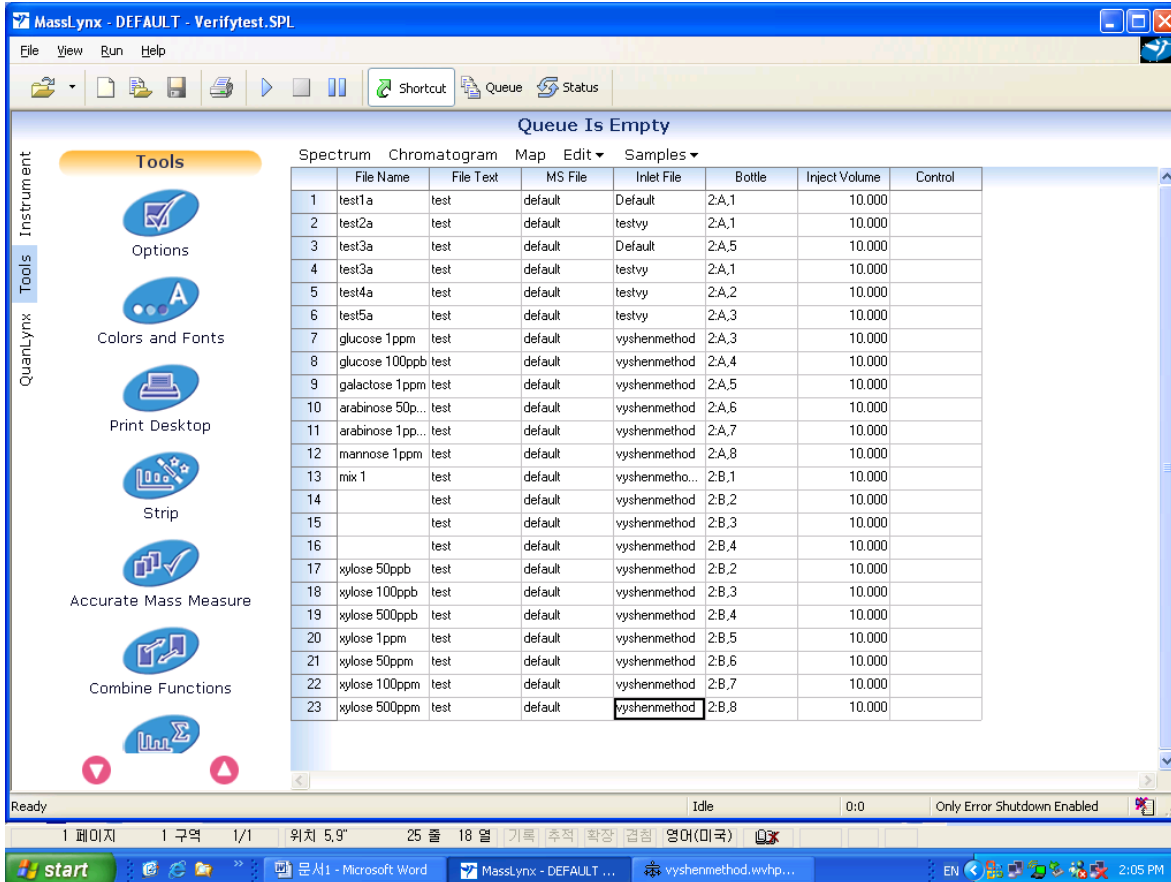
Insert sample

Open door of sample manager (in middle). Pull out tray by squeezing the lever and pulling out the tray. Place sample in tray, noting the location and tray number, e.g. 2:A,1. Slide tray back in. Make sure it clicks in place before closing the door

Set up the run

Right click and choose 'add' and the number of samples you want to run

In the queue, enter the file name = what you want to call the sample; file text=any notes about the sample; MSfile=default (for now); inlet file=choose your method; bottle = tray:column,row; inject volume =10.



To choose any of the above you can right click and browse e.g. to choose a different inlet method.

Running a sample

To see if it is ready go to Instrument tab on left, inlet and status tab—there should be a green light on ready and OK

Turn on the faucet icon to start the pump the droplet should appear

Click the number of the queued sample on the left which should highlight the row

Click on the 'start run' icon –a right pointing triangle

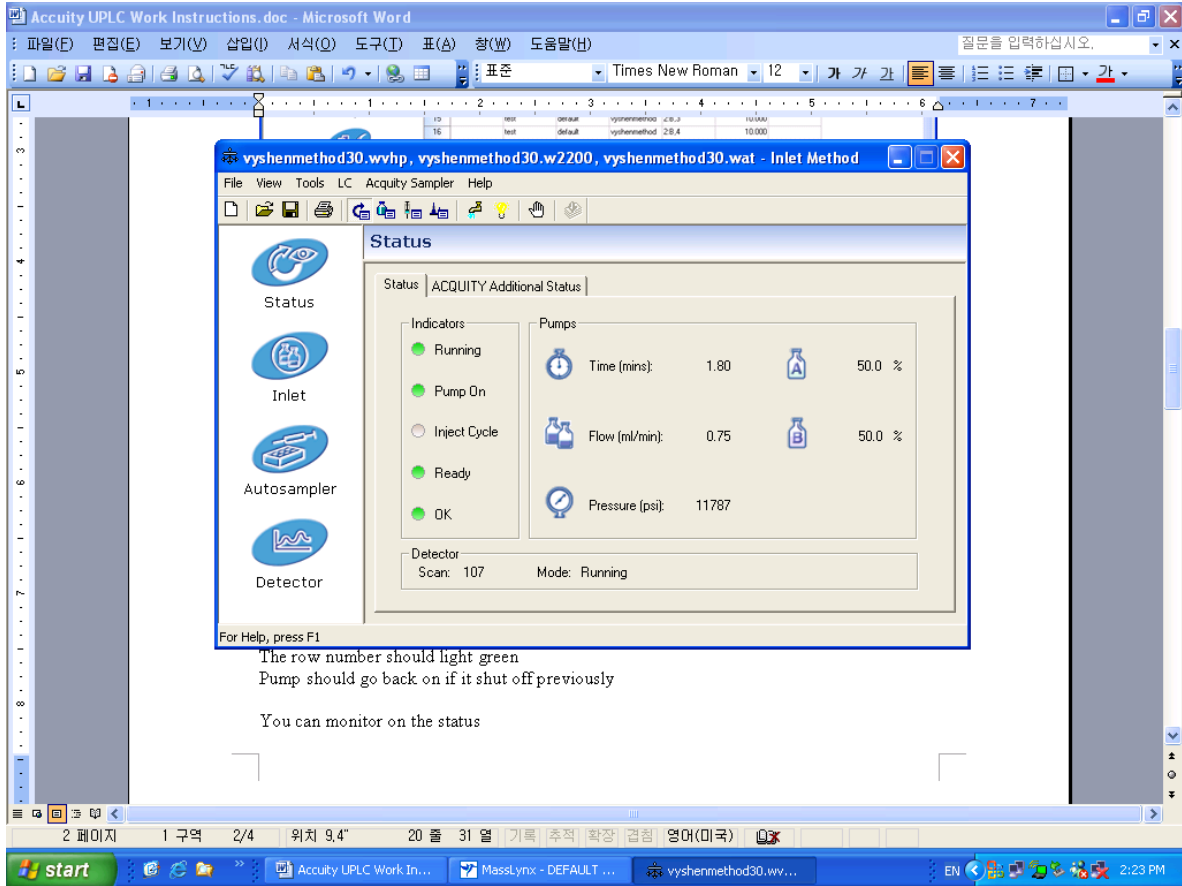
Click yes to save queue list

Verify from sample x to sample y with an OK

The row number should light green

Pump should go back on if it shut off previously

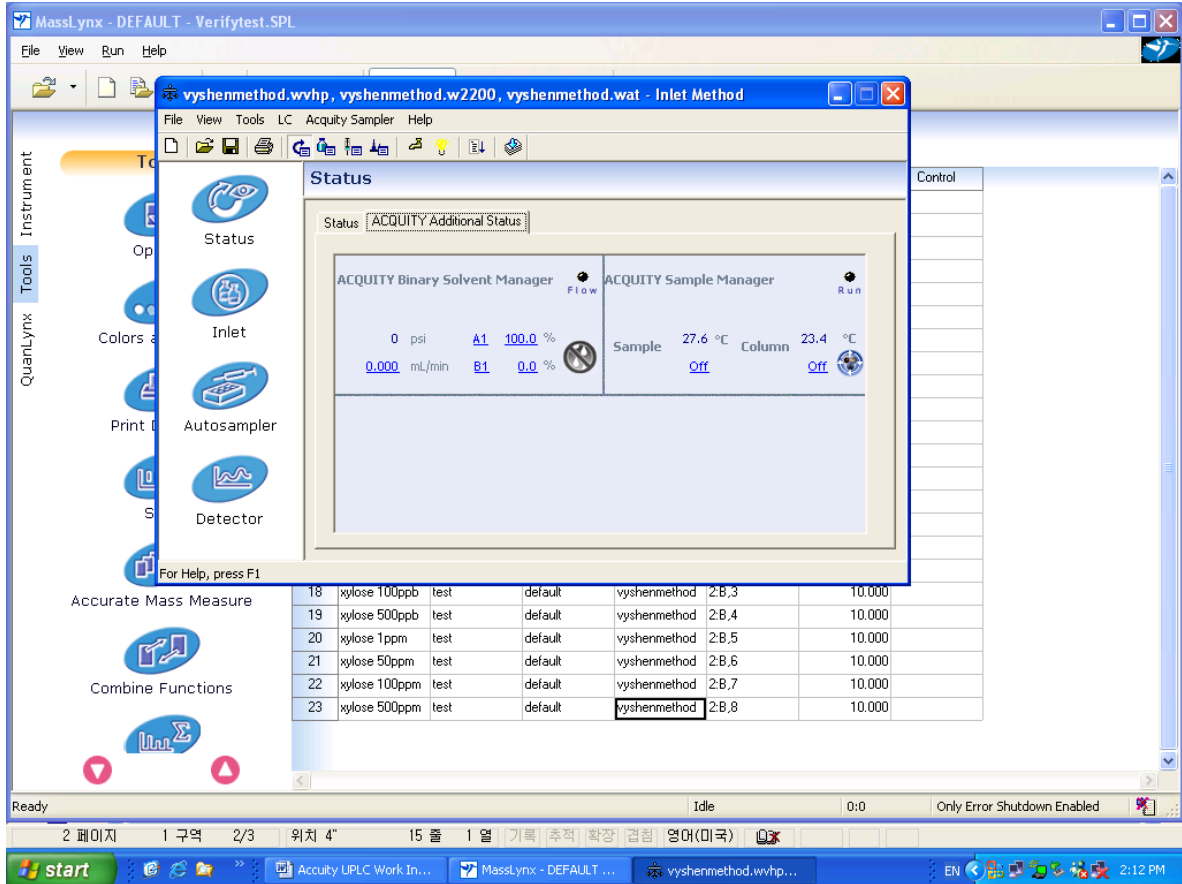
You can monitor on the status window



Editing methods

TO edit a method right click choose edit

Click on INLET on the left Tools bar---and on the general tab



Choose solvents A and B

Run time

Seal wash = ~4

Time

Flows

Percent of each solvent at time x

Curve =6 (linear)

Click OK

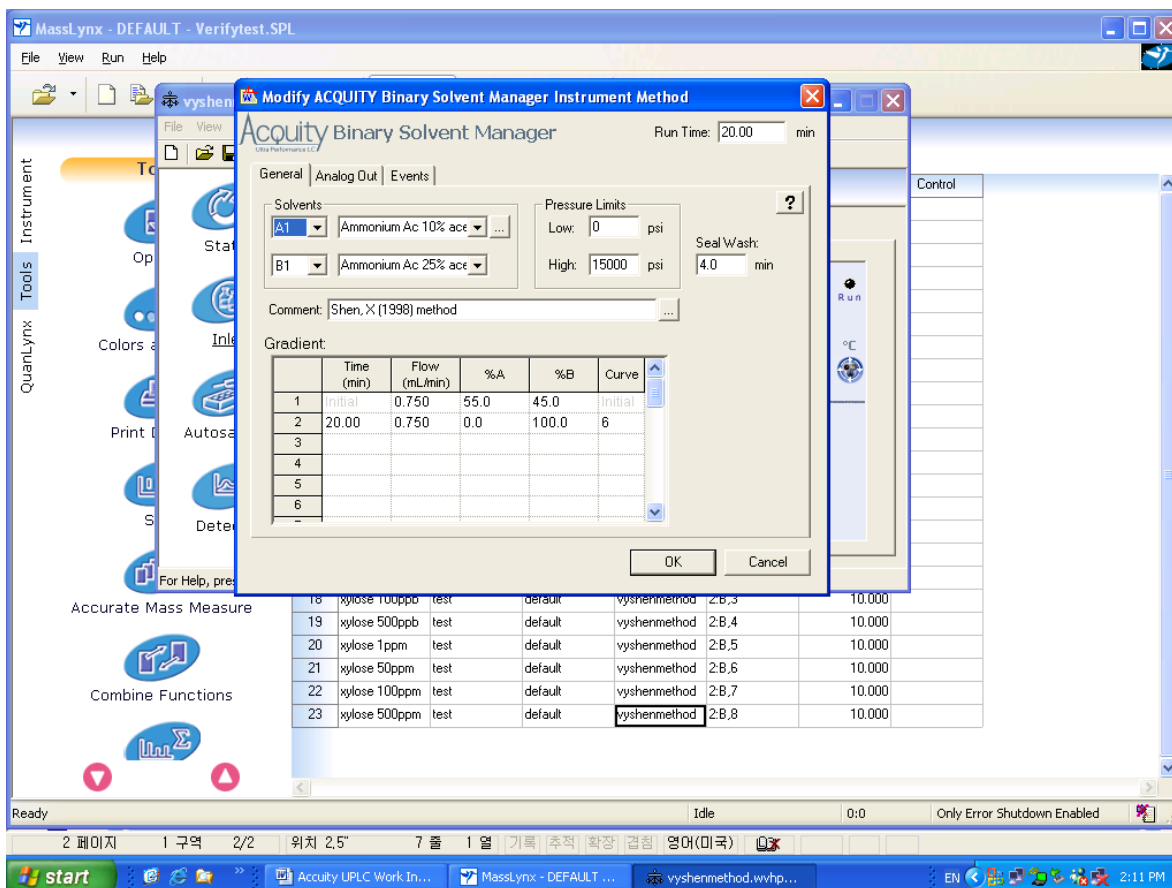
Click the save or save as to save the method

There are other parameters such as wavelength on the detector icon that can be changed

NOTE: detector stop time should match the run time

To stop in the middle of a run

You must stop the play button AND on the status click LC and press stop run on the pull down



Viewing chromatographs

Click the queue number to highlight the row

Click the chromatograph on the top of the list

Click the clock on to toggle real time to see it as it detects

Shutdown

Turn off pump

Close out all windows

Turn off the three power buttons